

# Small VBR<sup>®</sup>

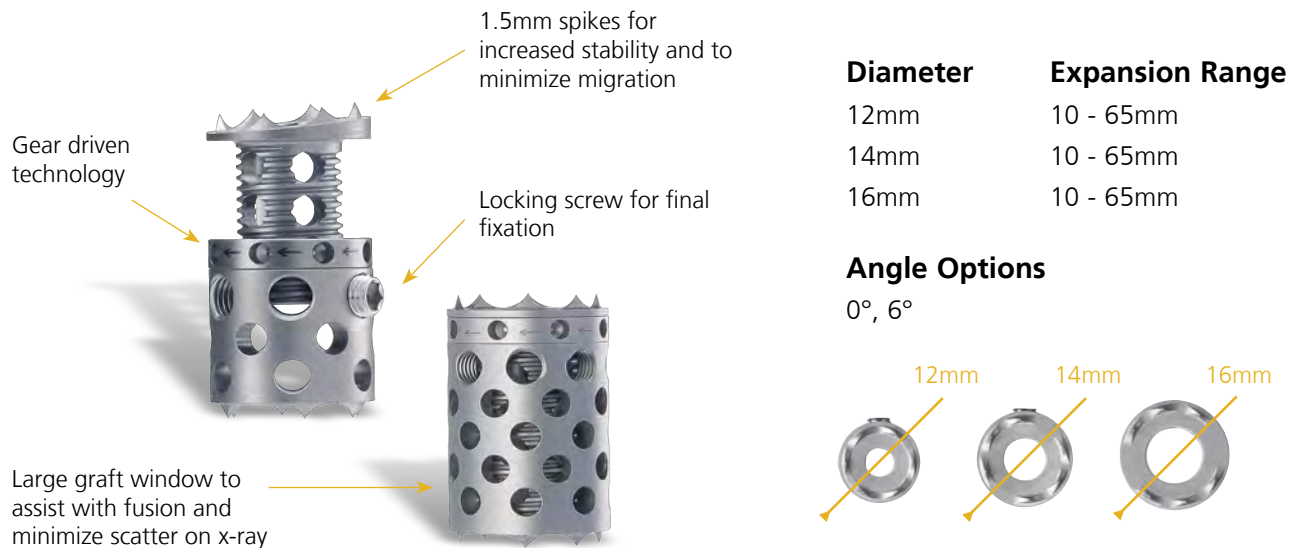
vertebral body replacement



Over a Century  
of Innovation

# System

The Small VBR is used for the surgical reconstruction of defects of the thoracolumbar spine (T1-L5). With only a few basic instruments, a wide range of implants can be used to match patient anatomy and restore height and sagittal balance for spinal correction.

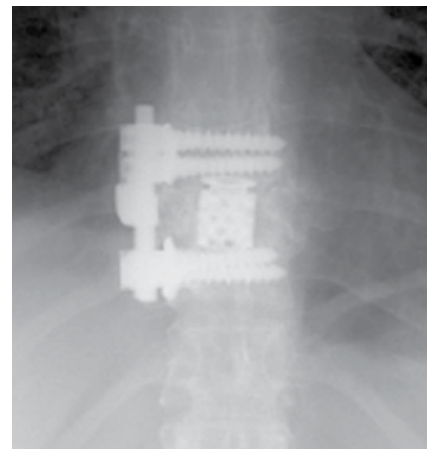


# Indications

The Small VBR is intended for use in the thoracic and lumbar spine (T1-L5) to replace a collapsed, damaged, or unstable vertebral body due to tumor or trauma (i.e. fracture).

The Small VBR is intended to be used with supplemental internal spinal fixation systems that are cleared by FDA for use in the thoracic and lumbar spine. Such systems include posterior pedicle screw and rod systems, anterior plate systems, and anterior screw and rod systems

The use of bone grafting material with the Small VBR is optional.



T8-T10 anterior stabilization with Small VBR

Department of Neurosurgery,  
Washington University,  
St. Louis, Missouri

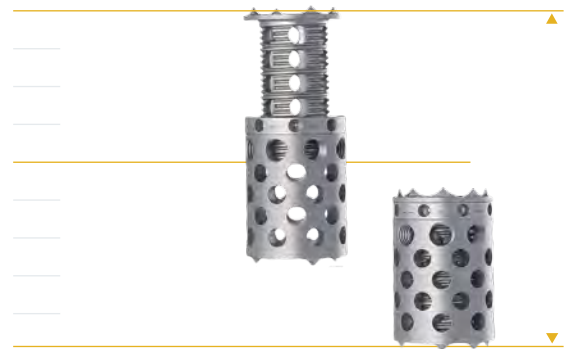
# Advantages

The Small VBR may be continuously expanded in situ, allowing for easy placement and bridging of the defect. The implant is anchored safely between the adjacent vertebral bodies.

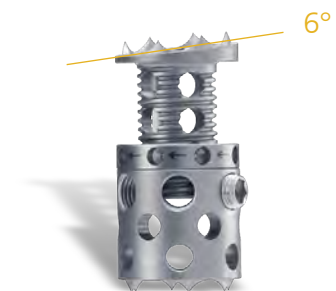
The implants are designed with large contact areas and fixed end caps with spikes to safely engage the vertebral end plates to minimize migration and subsidence.

All implants may be filled with bone graft before and after insertion. Additional application of bone graft outside the implant may enhance the fusion mass.

- Easy, gear driven expansion
- Adjustable to match anatomy
- Simple, limited instrumentation
- Three diameters, two angles
- Fillable with bone graft or substitute
- Disposable, single-use cassette heads
- Titanium alloy



Easy-to-use distractor



100,000

Cages

Global Corpectomy Market Leader

## Innovative Spinal Implants

## Components

Implant	Expansion Range	Angulation	Product Number
Small VBR, Ø 12mm	10–13mm	0°	CS 2250-12-10
	12–17mm	0°	CS 2250-12-12
	16–25mm	0°	CS 2250-12-16
	16–25mm	6°	CS 2250-12-166
	24–40mm	0°	CS 2250-12-24
	24–40mm	6°	CS 2250-12-246
	39–65mm	0°	CS 2250-12-39
	39–65mm	6°	CS 2250-12-396
Small VBR, Ø 14mm	10–13mm	0°	CS 2250-14-10
	12–17mm	0°	CS 2250-14-12
	16–25mm	0°	CS 2250-14-16
	16–25mm	6°	CS 2250-14-166
	24–40mm	0°	CS 2250-14-24
	24–40mm	6°	CS 2250-14-246
	39–65mm	0°	CS 2250-14-39
	39–65mm	6°	CS 2250-14-396
Small VBR, Ø 16mm	10–13mm	0°	CS 2250-16-10
	12–17mm	0°	CS 2250-16-12
	16–25mm	0°	CS 2250-16-16
	16–25mm	6°	CS 2250-16-166
	24–40mm	0°	CS 2250-16-24
	24–40mm	6°	CS 2250-16-246
	39–65mm	0°	CS 2250-16-39
	39–65mm	6°	CS 2250-16-396
Locking screw			CS 2259

Instruments	Product Number
Manual expansion instrument	CS 2252
Inserter for small heights	CS 2255-1
Inserter for large heights	CS 2255-2
Handle	CS 2256-01
Assist handle	CS 2256-02
Outer shaft	CS 2256-20
Inner shaft	CS 2256-21
Implant releasing rod	CS 2256-22
Screwdriver with holder, hex 2.5mm	CS 2261
Lollipop trial, Ø 12-14mm	CS 2265-1
Lollipop trial, Ø 16-20mm	CS 2265-2
Measuring template for Small VBR	CS 2266-3
Impactor, straight, height 8mm	CS 2274-2
Measuring caliper	CS 5788
12mm disposable cassette head	CS 2256-12
14mm disposable cassette head	CS 2256-14
16mm disposable cassette head	CS 2256-16

