

Components

Implants	Length	Product Number
mambo single plate XXS yellow	20mm	CS 1820-20
mambo plate XS violet, 4-hole	22mm	CS 1818-22
mambo plate XS violet, 6-hole	37mm	CS 1818-37
mambo extension plate XS violet		CS 1818-02
mambo plate S yellow, 4-hole	24mm	CS 1820-24
mambo plate S yellow, 6-hole	40mm	CS 1820-40
mambo extension plate S yellow		CS 1820-02
mambo plate M green, 4-hole	26mm	CS 1822-26
mambo plate M green, 6-hole	45mm	CS 1822-45
mambo extension plate M green		CS 1822-02
mambo plate L blue, 4-hole	29mm	CS 1824-29
mambo plate L blue, 6-hole	50mm	CS 1824-50
mambo extension plate L blue		CS 1824-02
mambo settling screw silver		CS 1826-01
mambo clamping screw gold		CS 1826-02
mambo bone screw silver, Ø 3.5mm	13mm	CS 1830-13
	15mm	CS 1830-15
	17mm	CS 1830-17
	19mm	CS 1830-19
mambo rescue screw gold, Ø 4mm	13mm	CS 1832-13
	15mm	CS 1832-15
	17mm	CS 1832-17
	19mm	CS 1832-19

100 years

Over A Century Of Innovation



18221 Edison Avenue, Chesterfield, MO 63005
 Phone: 866.519.0268 | Fax: 636.519.0271
www.ulrichmedicalusa.com



patented
 or/and
 pat. pend.

World Headquarters
ulrich medical®
 Buchbrunnenweg 12
 89081 Ulm, Germany

mambo[®]

modular cervical plate system



100Years

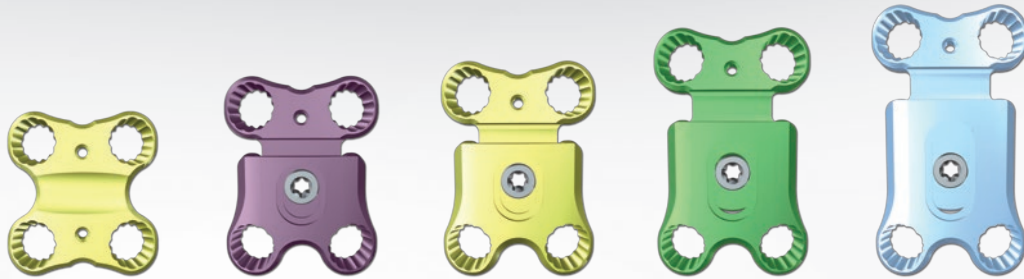
Over A Century Of Innovation



Ulrich
medical USA

System

- Cervical plate system for anterior stabilization
- Possibility of dynamic, constrained, or semi constrained options
- Modular design for individual plate lengths
- Gliding plate components allow for optimal screw placement
- One step locking mechanism with backout protection
- Preassembled and contoured plate



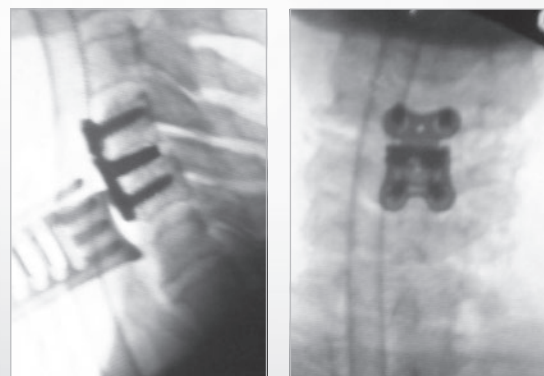
Indications

mambo is used in cases of instabilities from the following conditions:

- After removal of the disc
- Fracture
- Tumor or pseudarthrosis
- Previous unsuccessful cervical spine operations and within the framework of degenerative diseases of the cervical spine.



St. Joseph Hospital, Berlin, Germany

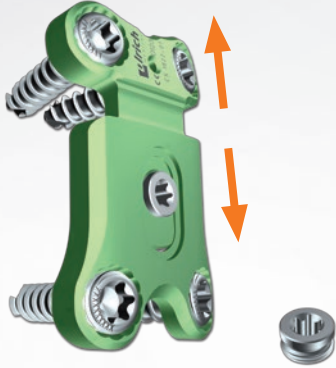


Spinal instability at C4/C5
Stabilization with mambo

Advantages

Two Possibilities

- Dynamic plate construct

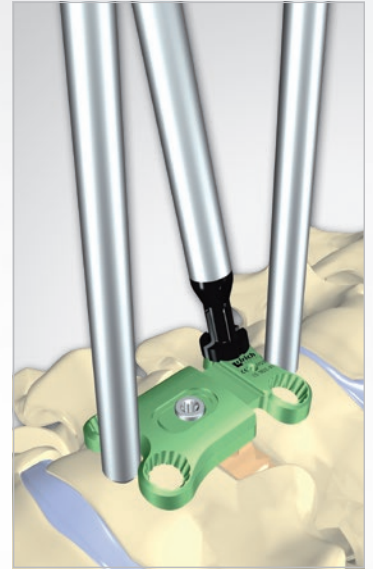


Usage of settling screw

- Static or constrained plate construct



Usage of clamping screw

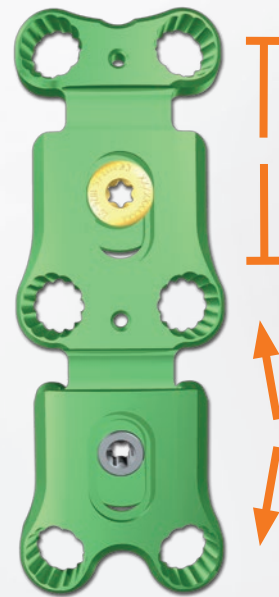


System Benefits

- One step locking mechanism with backout protection
- No irritation of adjacent discs
- Preassembled and contoured plate
- Easy handling
- Clearly arranged set
- Dynamic instrumentation (Wolff's law)
- Reduced bone graft resorption
- Optimized load sharing

Modular Lengths

- Modular design for flexibility in plate lengths
- Gliding plate components allow for optimal and flexible screw placement



Available in 1 to 5 segment plate constructs